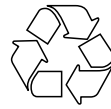


# TG-F 500

## TERRACE DRAIN GRILLE



ArchiGreen Roof Ltd  
3 Patzay Pal Utca • Győr • H-9024  
Website: [www.archigreenroof.com](http://www.archigreenroof.com)  
E-mail: [info@archigreenroof.com](mailto:info@archigreenroof.com)

TG-F 500 is a 50 mm high terrace grille comprising two elements:

A. The base, a square-shaped casing with an open underside, is made of UV-resistant polypropylene (PP).

B. The grating, mesh size 44x11 mm, is made of galvanised steel and is removable.

The grating is placed on the base with the bottom part of the grating being recessed into the base.

The grating is the lid, in this case, and can be easily taken out and is easy to clean.

The mesh pattern of the grating prevents slipping hazards.

TG-F fits best where a height of 50 mm is sufficient for the unit to fit flush into its surrounding.

Screws are made of stainless steel (Grade A2) and their fixing is in accordance with DIN 7505.

TG-F stands on 2 expanded PP load distribution footprints and can be walked upon.

### Use

Usage of the TG-F range include:

- Allowing for the inspection and maintenance of outlets
- Channeling abundant surface water into the outlets effectively and immediately

### Application area

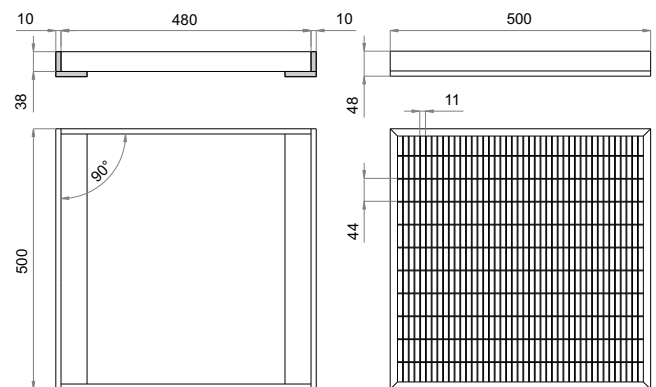
TG-F 500 is directly installed over each roof outlet where the size of surrounding terrace tiles are 500 x 500 mm and further adjustment of the terrace grille unit is not required to fit flush into its surrounding. The TG-F range can be walked upon (Load class: A 15).

Size (L x W x H)	500 x 500 x 50 mm
Weight	5.17 kg
Base	Polypropylene (PP)
Colour	RAL 7032 - pebble grey
Grating	Galvanised steel
Surface of grating	300 x 300 mm
Mesh size	44 x 11 mm
Banding / Edging bars	L-shaped section
Perforations of grating	German FLL Guidelines
Effective drainage area	144,984 mm <sup>2</sup>
Screws (Grade)	Stainless steel (A2)
Screw fixing standard	German Standard DIN 7505
Load class	A 15
Surface / footprint	30,000 mm <sup>2</sup>
Load distribution surface	60,000 mm <sup>2</sup>
Environmental aspect	Fully recyclable

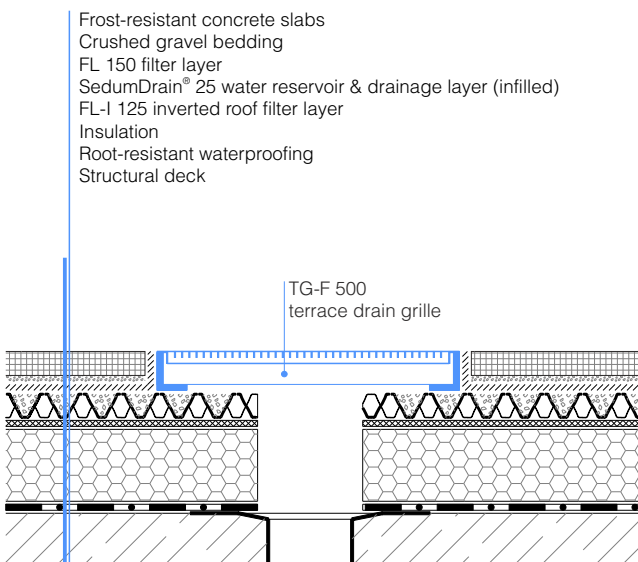
### Specification suggestion

ArchiGreen® TG-F 500 fixed height terrace drain grille unit consists of a base made of UV-resistant polypropylene (PP), RAL colour 7032, with an open underside and a removable steel grating that is fully galvanised. TG-F 500 is installed over outlets on roof terraces and beneath open-ended down pipes. Owing to its A 15 load class, the unit can be installed in pedestrian trafficked areas. Size and weight including grating: 500 x 500 x 50 mm (L x W x H); 5.17 kg. Mesh size: 44 x 11 mm. Two expanded load distribution footprints are fixed to the underside via stainless steel screws (Grade: A2). Fastener fixing standard: German Standard DIN 7505. Delivery and installation is in accordance with manufacturer's instructions.

### Technical illustration



### Installation example



### Tools required

No special tools are required for the installation of this product.

### Packaging unit

TG-F 500 can be despatched in corrugated boxes or on wooden pallets depending on the size of the order. 80 units of TG-F 500 being stretch wrapped would fit on a single EUR-pallet (1200x800 mm).