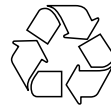


# TG-A 300

## TERRACE DRAIN GRILLE



ArchiGreen Roof Ltd  
3 Patzay Pal Utca • Gyor • H-9024  
Website: www.archigreenroof.com  
E-mail: info@archigreenroof.com

TG-A 300 is a height adjustable terrace grille, infinitely adjustable between 80 and 110 mm, comprising three elements:

A. The base, a square-shaped casing with an open underside, is made of UV-resistant polypropylene (PP).

B. The grating, mesh size 44x11 mm, is made of galvanised steel and is removable.

C. An adjuster steel frame (0.8 mm thickness) for height adjustment purposes that is fully galvanised.

The grating is placed on top of the adjuster which is integrated into the base.

The mesh pattern of the grating prevents slipping hazards and is easy to clean.

Screws are made of stainless steel (Grade A2) and their fixing is in accordance with DIN7505.

TG-A stands on 2 expanded PP load distribution footprints and can be walked upon.

## Use

Usage of the TG-A range include:

- Ensuring that the height of the grating and the top level of the surroundings are exactly flush so as to prevent trip hazards and increase the aesthetic value of the overall layout. Height is adjustable between 80 and 110 mm.
- Allowing for the inspection and maintenance of outlets
- Efficient drainage of surface water into the outlets

## Application area

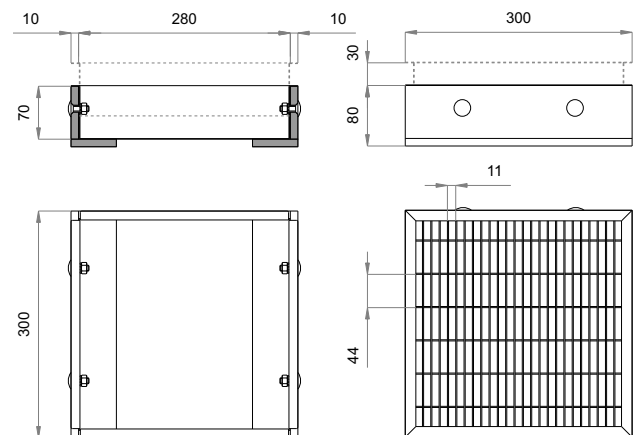
TG-A 300 is directly installed over each roof outlet where the size of surrounding terrace tiles are 300 x 300 mm and the adjustment of the height of the terrace grille unit is required to level with its surrounding. The TG-A range can be walked upon (Load class: A 15).

Size (L x W x H)	300 x 300 x 80-110 mm
Weight	3.47 kg
Base	Polypropylene (PP)
Colour	RAL 7032 - pebble grey
Grating	Galvanised steel
Mesh size	44 x 11 mm
Banding / Edging bars	L-shaped section
Perforations of grating	German FLL Guidelines
Effective drainage area	58,386 mm <sup>2</sup>
Screws (Grade)	Stainless steel (A2)
Screw fixing standard	German Standard DIN 7505
Load class	A 15
Load distribution surface	36,000 mm <sup>2</sup>
Environmental aspect	Fully recyclable

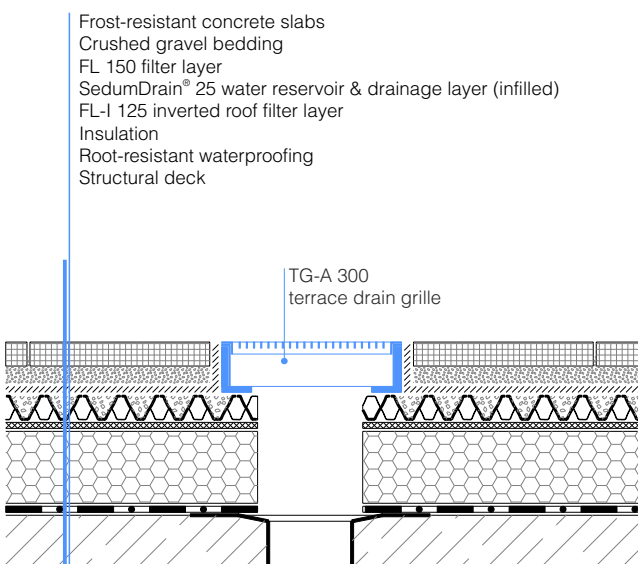
## Specification suggestion

ArchiGreen® TG-A 300 height adjustable terrace drain grille unit consists of a base made of UV-resistant polypropylene (PP), RAL colour 7032, with an open underside, a removable steel grating that is fully galvanised and a height adjuster plate made of 0.8 mm galvanised steel. The height can be infinitely adjusted between 80 and 110 mm. TG-A 300 is to be installed where height adjustment is required to level the grating with the surrounding units. It is installed over outlets on roof terraces. Owing to its A 15 load class, the unit can be installed in pedestrian trafficked areas. Size and weight including grating: 300 x 300 x 80–110 mm (L x W x H); 3.47 kg. Mesh size: 44 x 11 mm. Two expanded load distribution footprints are screwed to the underside. Nuts: M8 hexagonal nuts. Washers: Serrated lock washers. All screws, nuts and washers are stainless steel (Grade: A2). Fastener fixing standard: German Standard DIN 7505. Delivery and installation is in accordance with manufacturer's instructions.

## Technical illustration



## Installation example



## Tools required

A 13 mm open-ended spanner is needed to adjust the four pieces of M8 hex nuts (Grade: A2) to the appropriate height in order to level the grating with the top of the surrounding units.

## Packaging unit

TG-A 300 can be despatched in corrugated boxes or on wooden pallets depending on the size of the order. 96 units of TG-A 300 being stretch wrapped would fit on a single EUR-pallet (1200x800 mm).